



OCEANIC
RENEWABLES
SUMMIT

Developing a
sustainable supply
chain for floating
offshore wind

Giles Dickson,
CEO WindEurope

LISBOA – MUSEU DO
ORIENTE

24.05.23



Wind energy in Europe

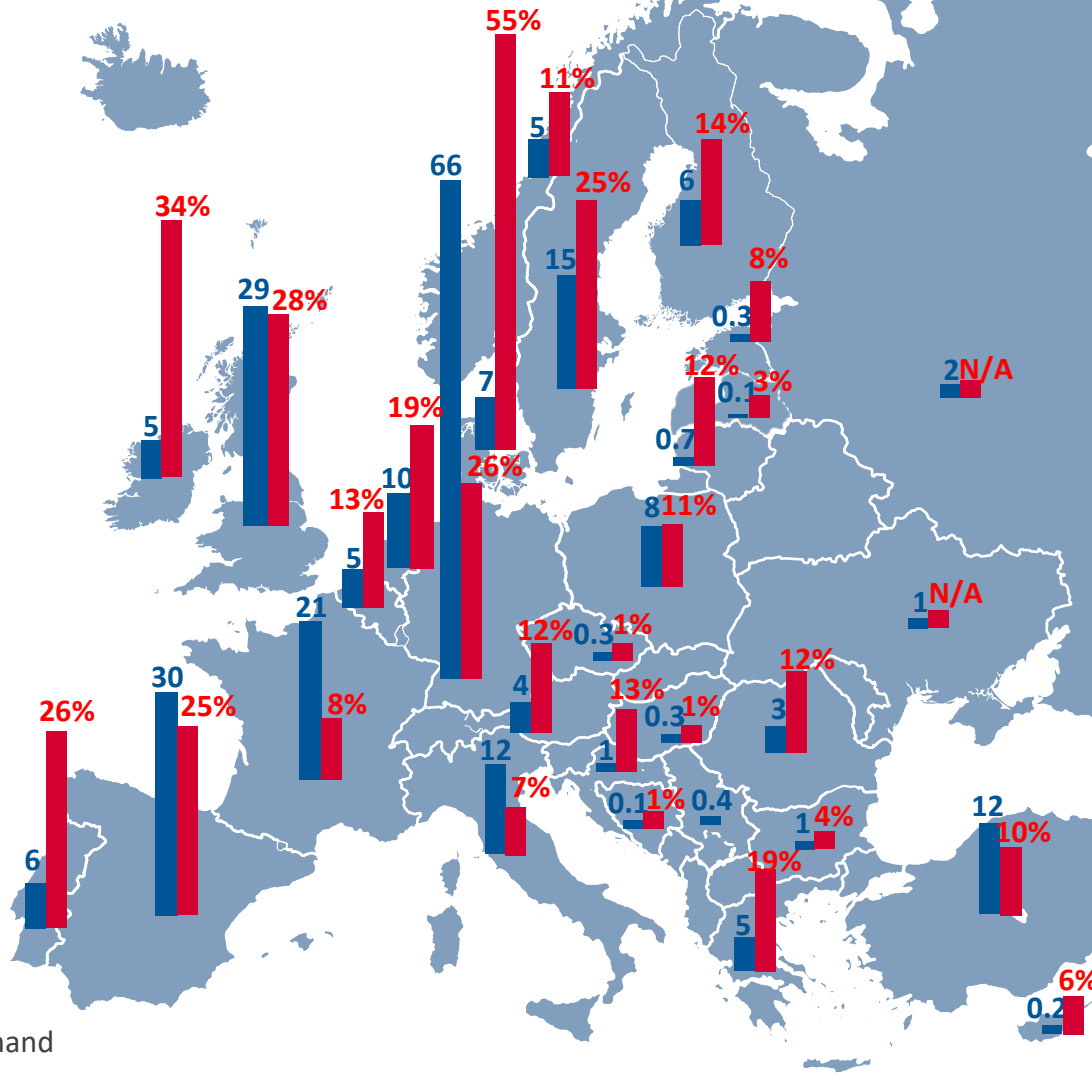
255 GW

17%

of Europe's
electricity demand

Wind
EUROPE

- GW installed
- Wind share of electricity demand

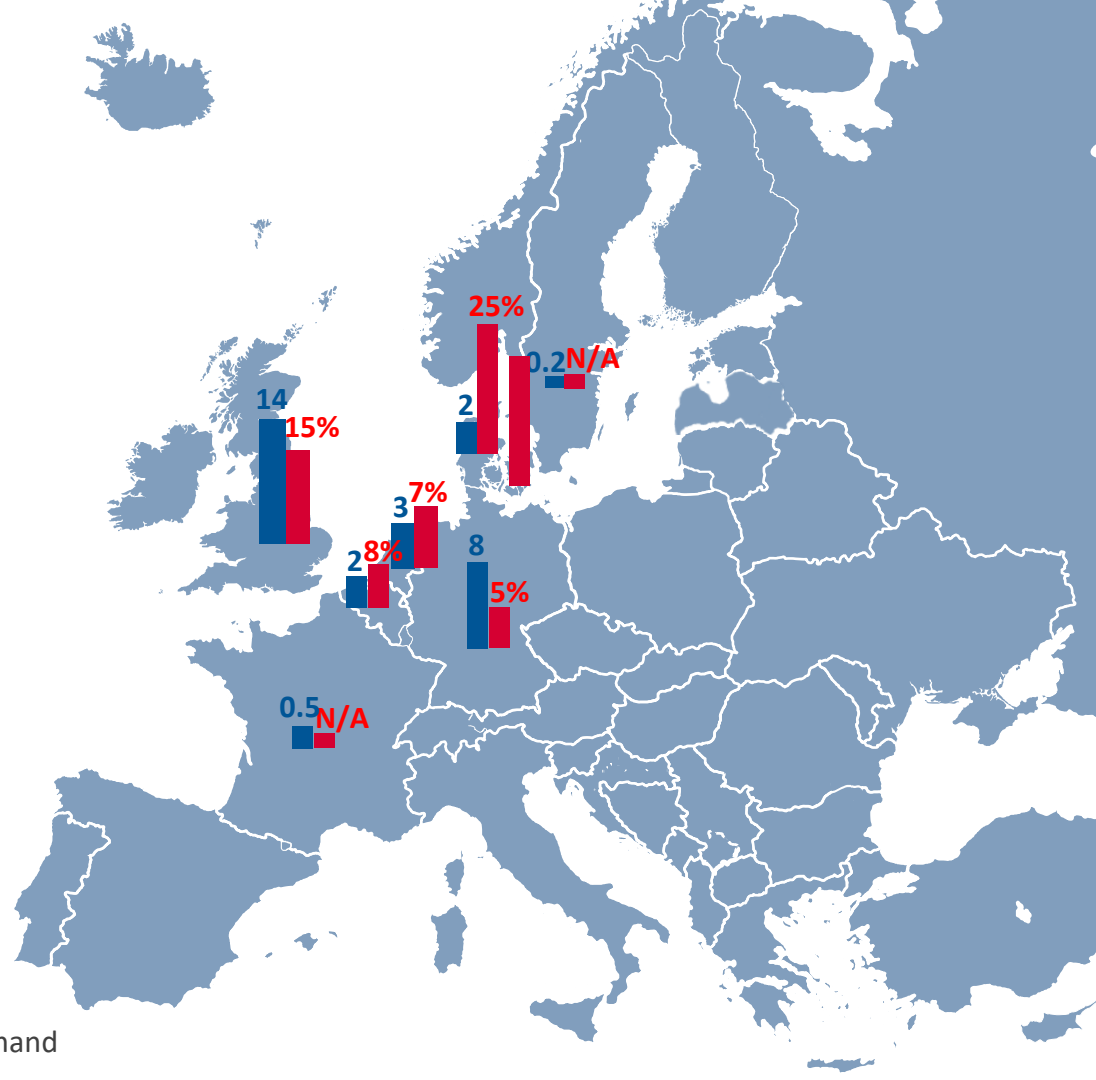


Offshore wind in Europe

30 GW

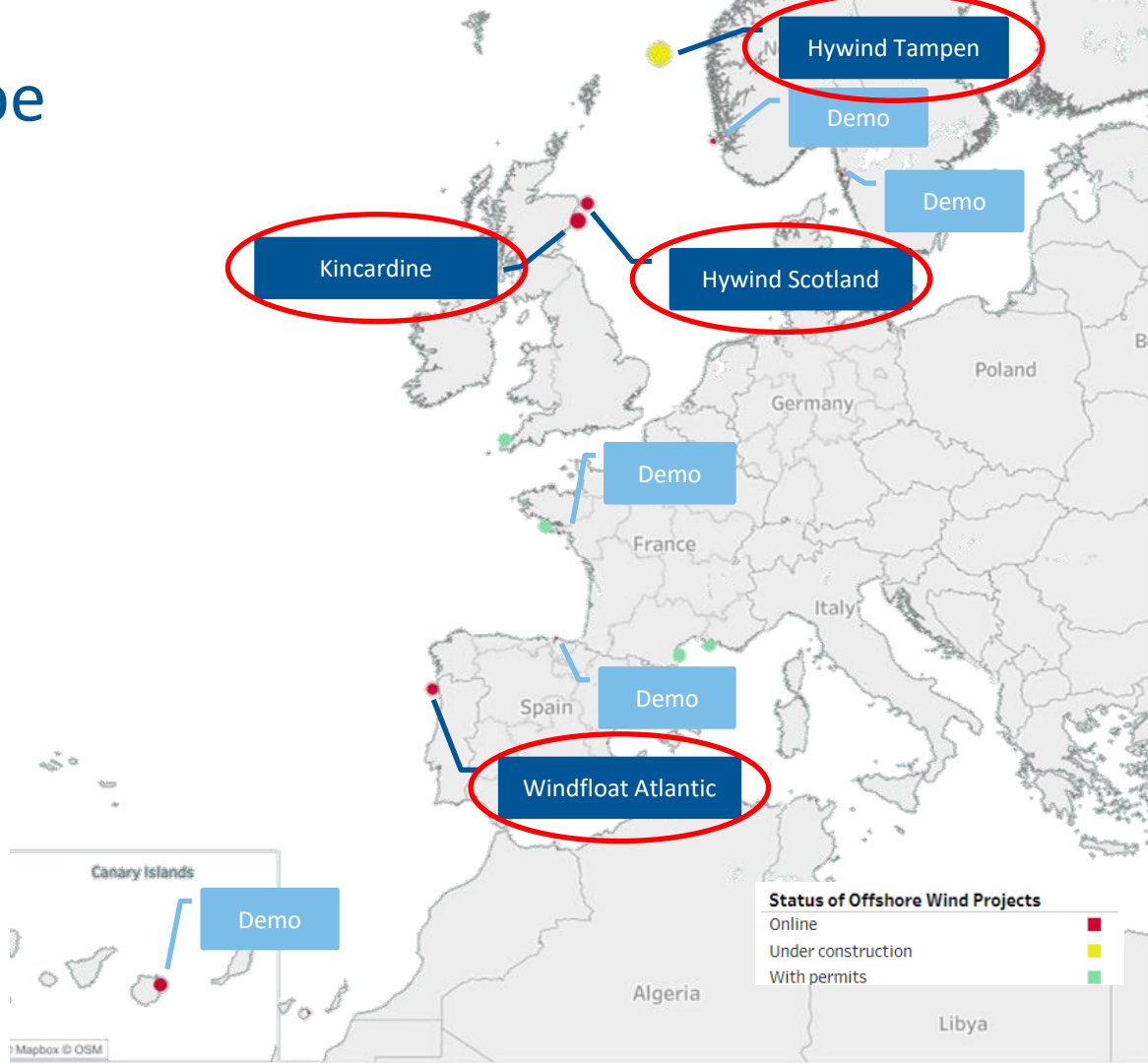
3%

of Europe's
electricity demand



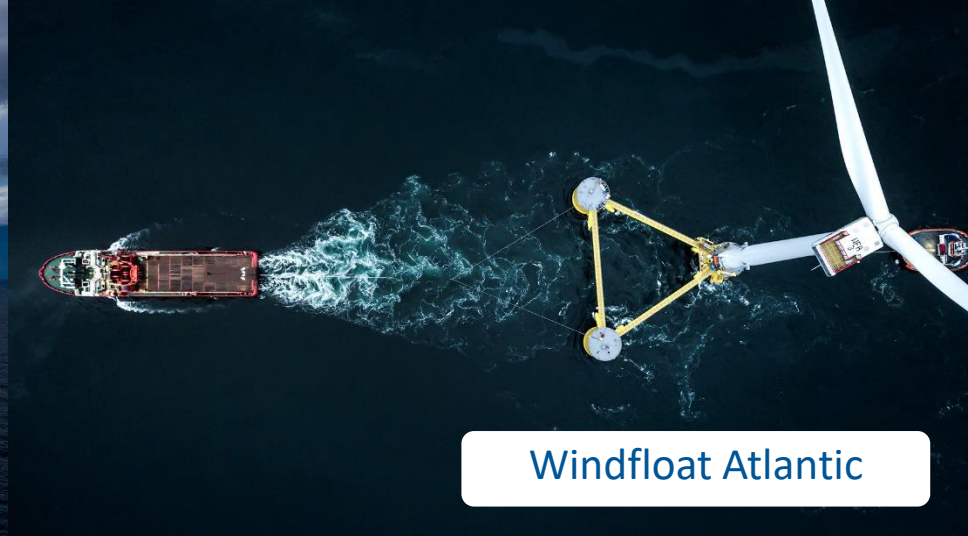
Floating wind in Europe

173 MW





Hywind Scotland



Windfloat Atlantic



Kincardine



Hywind Tampen

Europe has big ambitions for floating



1,500 MW



Up to 3,000 MW



3,500 MW



5,000 MW



Up to 10,000 MW



Up to 1,500 MW

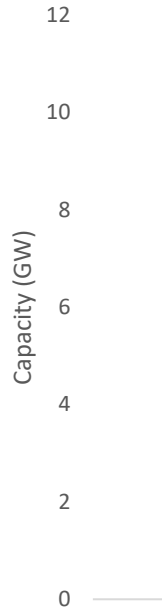


750 MW

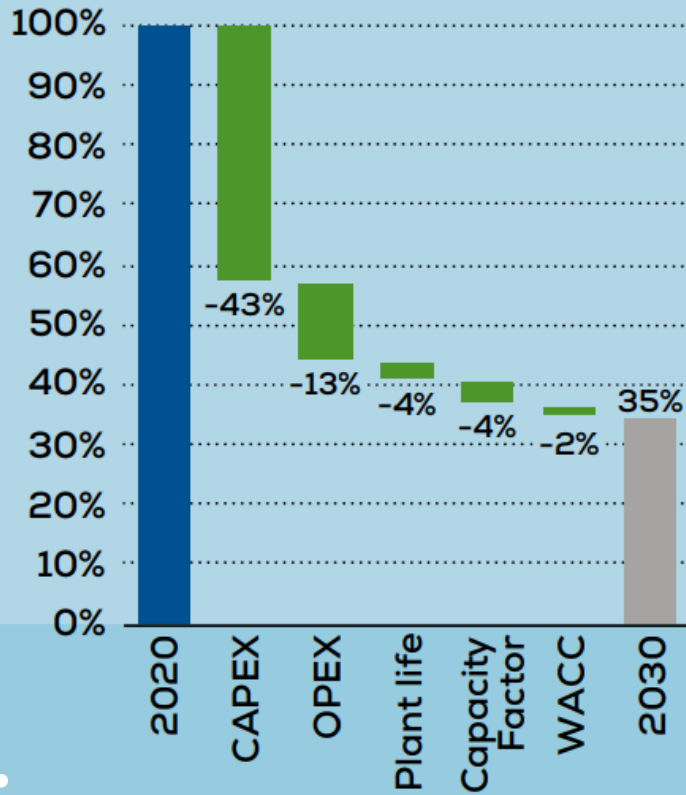


2,000 MW

Europe can do 10 GW of floating wind by 2030

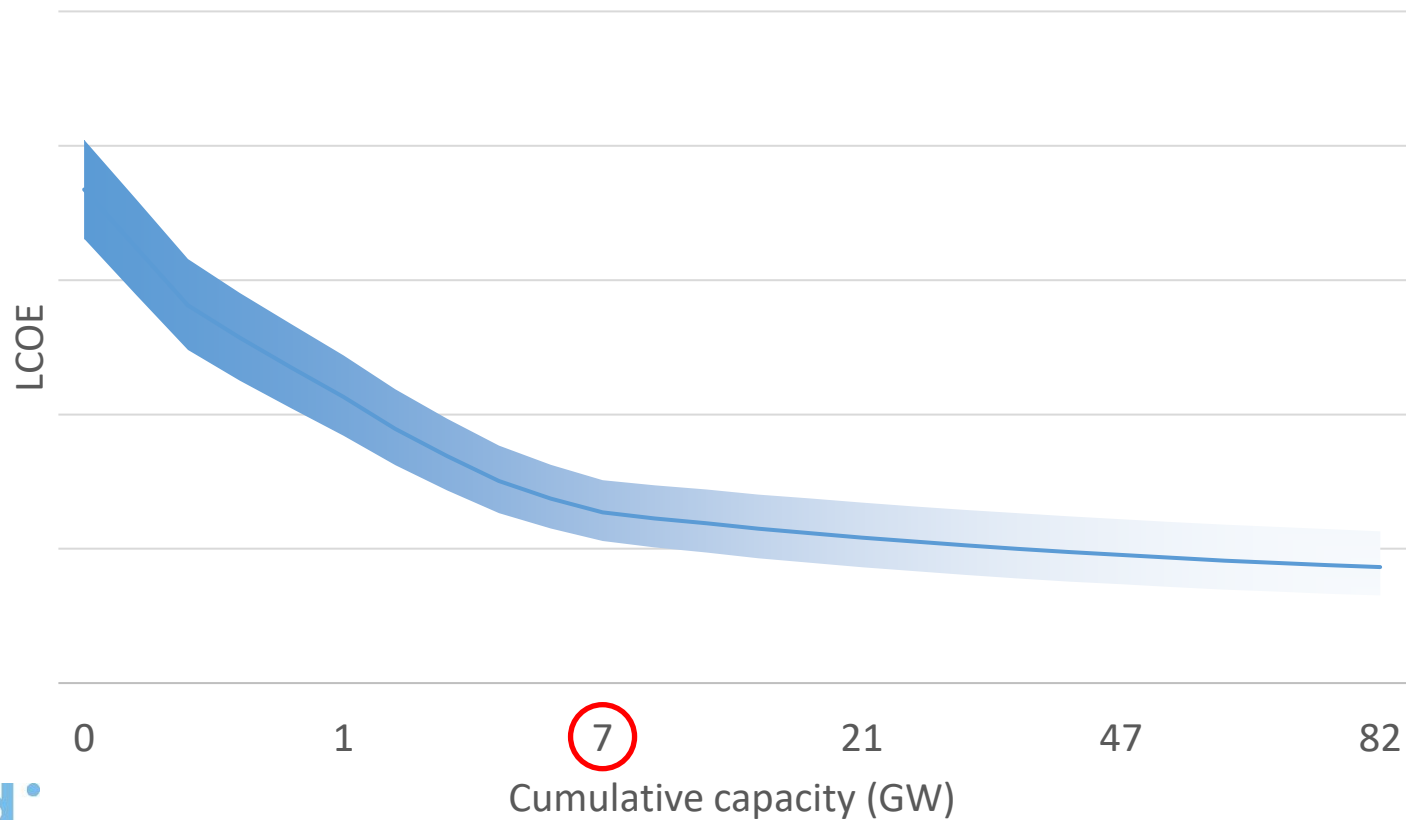


Economies of scale will reduce costs



1. Volume
2. Industrialisation
3. Knowledge transfer

Floating cost reduction needs volume



A technology race is still going on



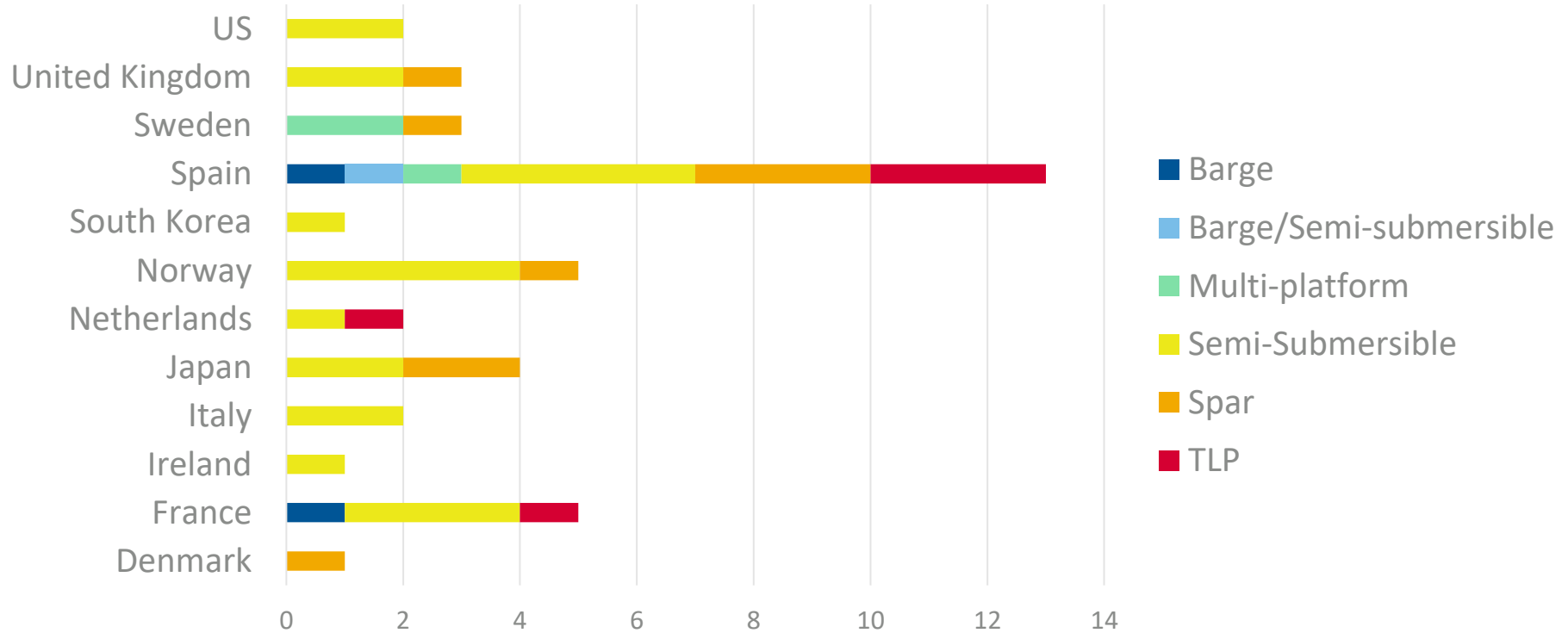
Tension Leg Platform

Barge

Semi-submersible

Spar

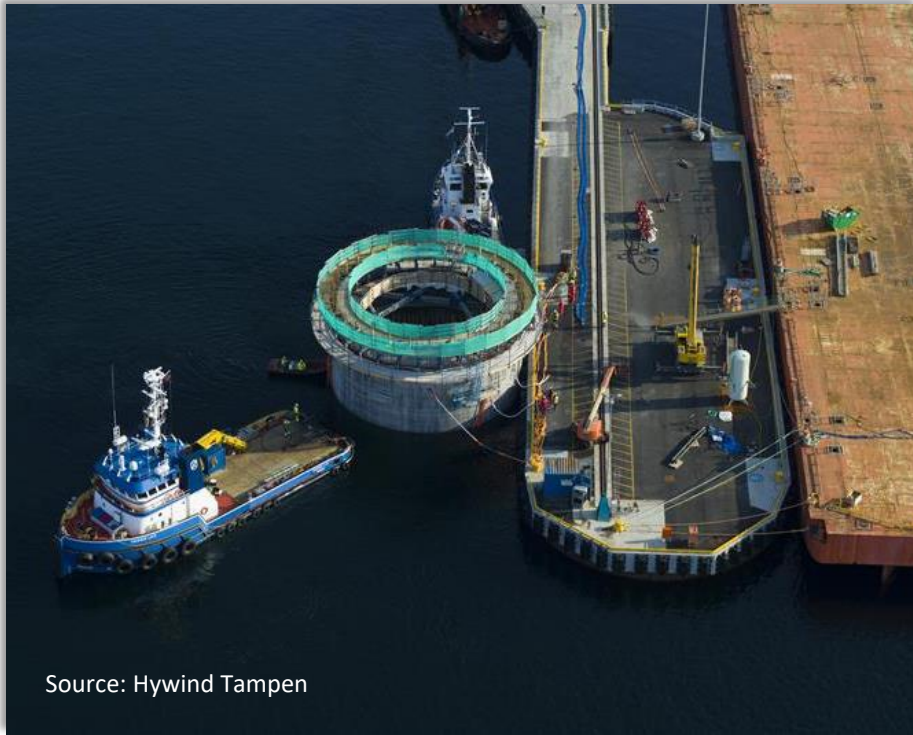
We need to standardise



We need to industrialise



Concrete vs steel floating structures

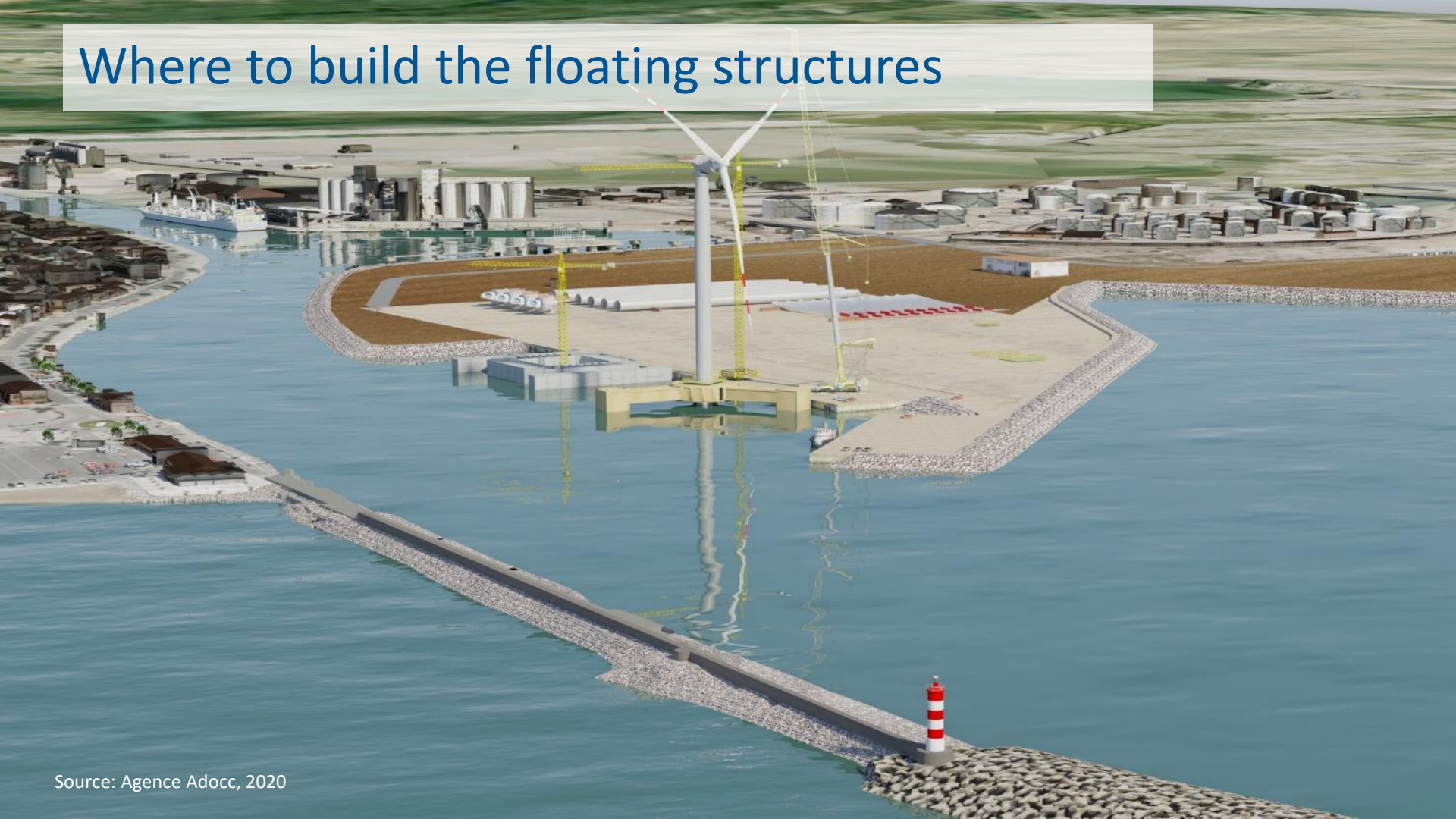


Source: Hywind Tampen



Source: TetraSpar

Where to build the floating structures



Where to build the floating structures



Inner Port

Outer Port



Source: Google Earth

Where to build the turbines

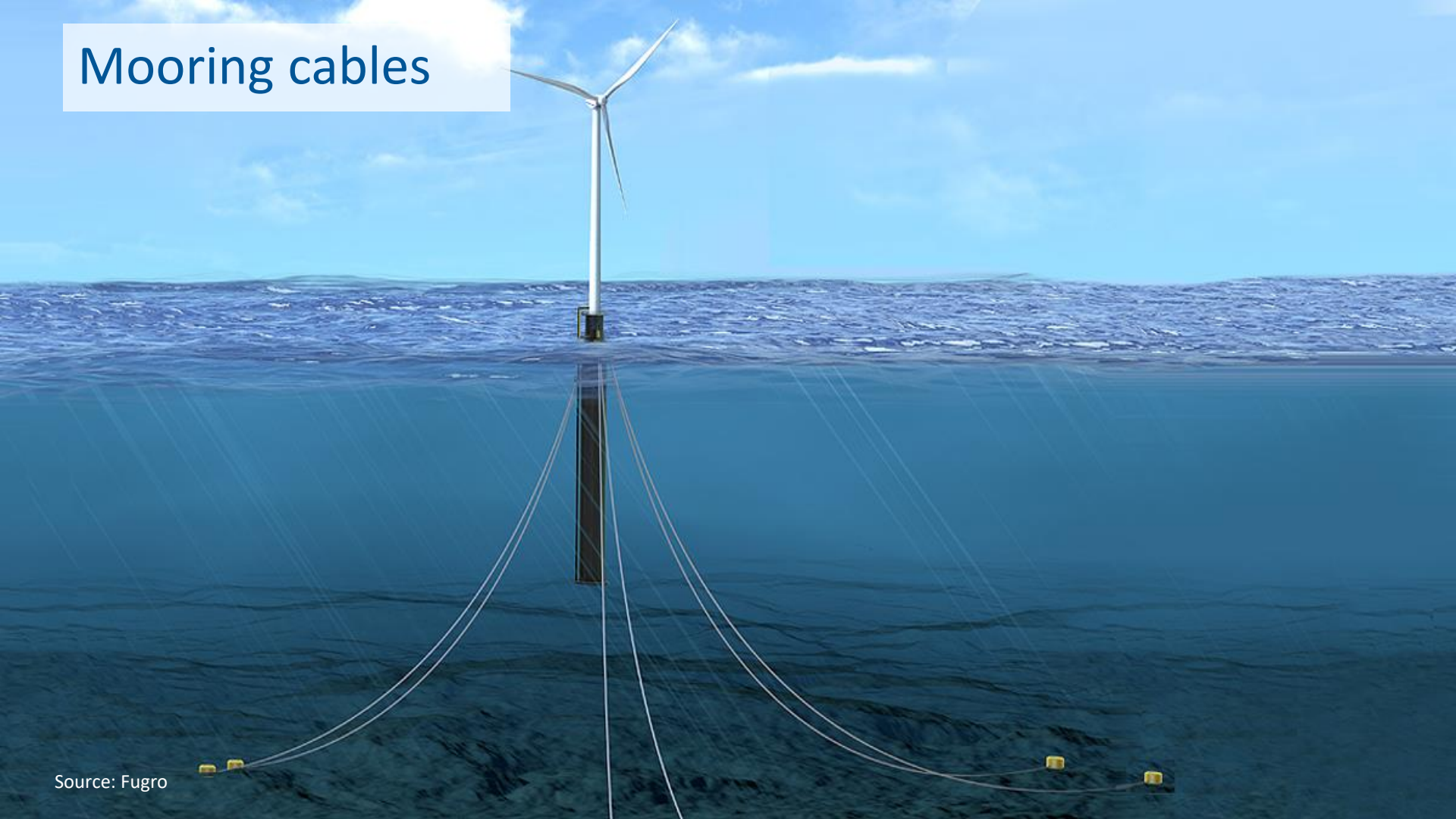


Source: RACE

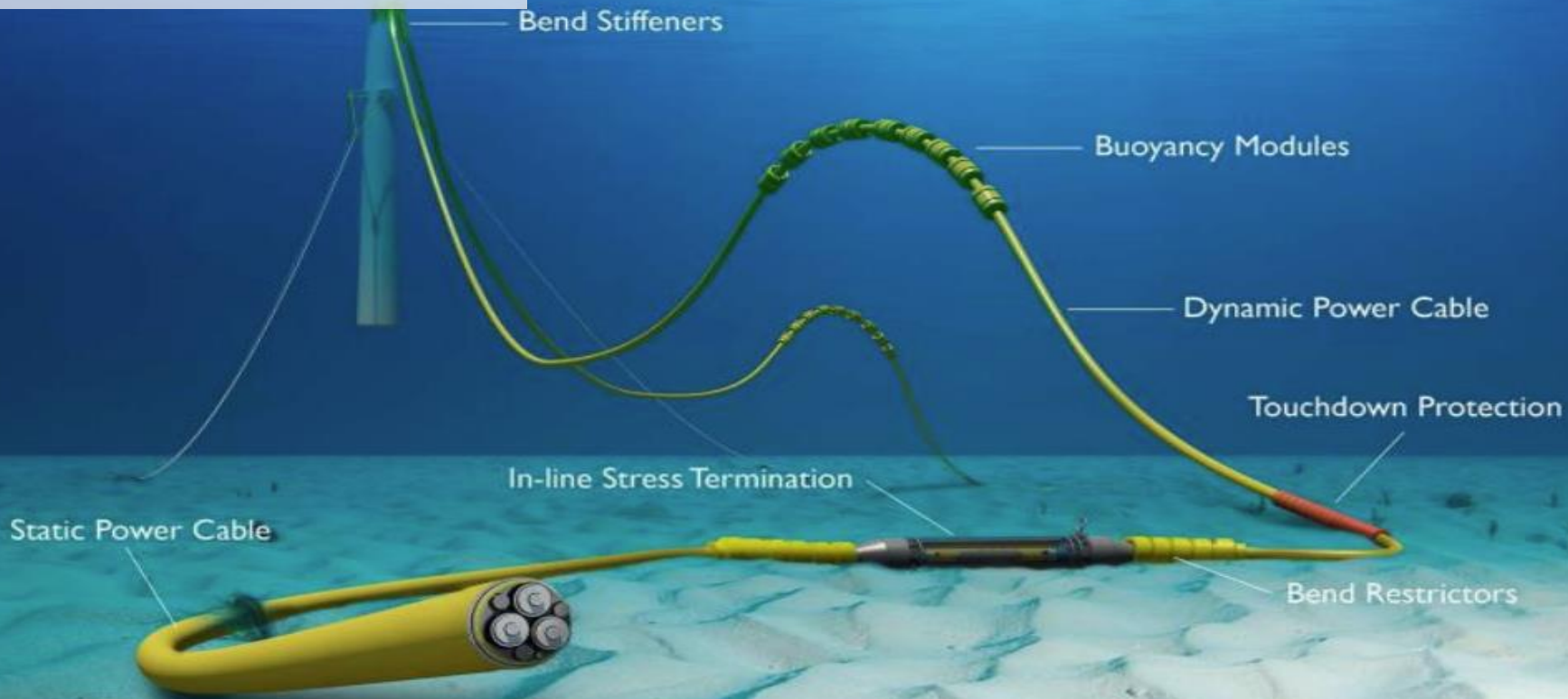


Source: SGRE, Twitter

Mooring cables



Dynamic cables



Human resources and skills



A woman in a blue protective suit and face shield is working in a factory. She is leaning over a workbench, looking at a piece of equipment. The background shows a large industrial facility with other workers in similar suits.

Need a proactive industrial policy

Use new state aid flexibility

Priority to “made in Europe”

Non-price criteria in auctions



100%
price

Cost auction
model

30%

70%
price

Value auction
model

How many auctions



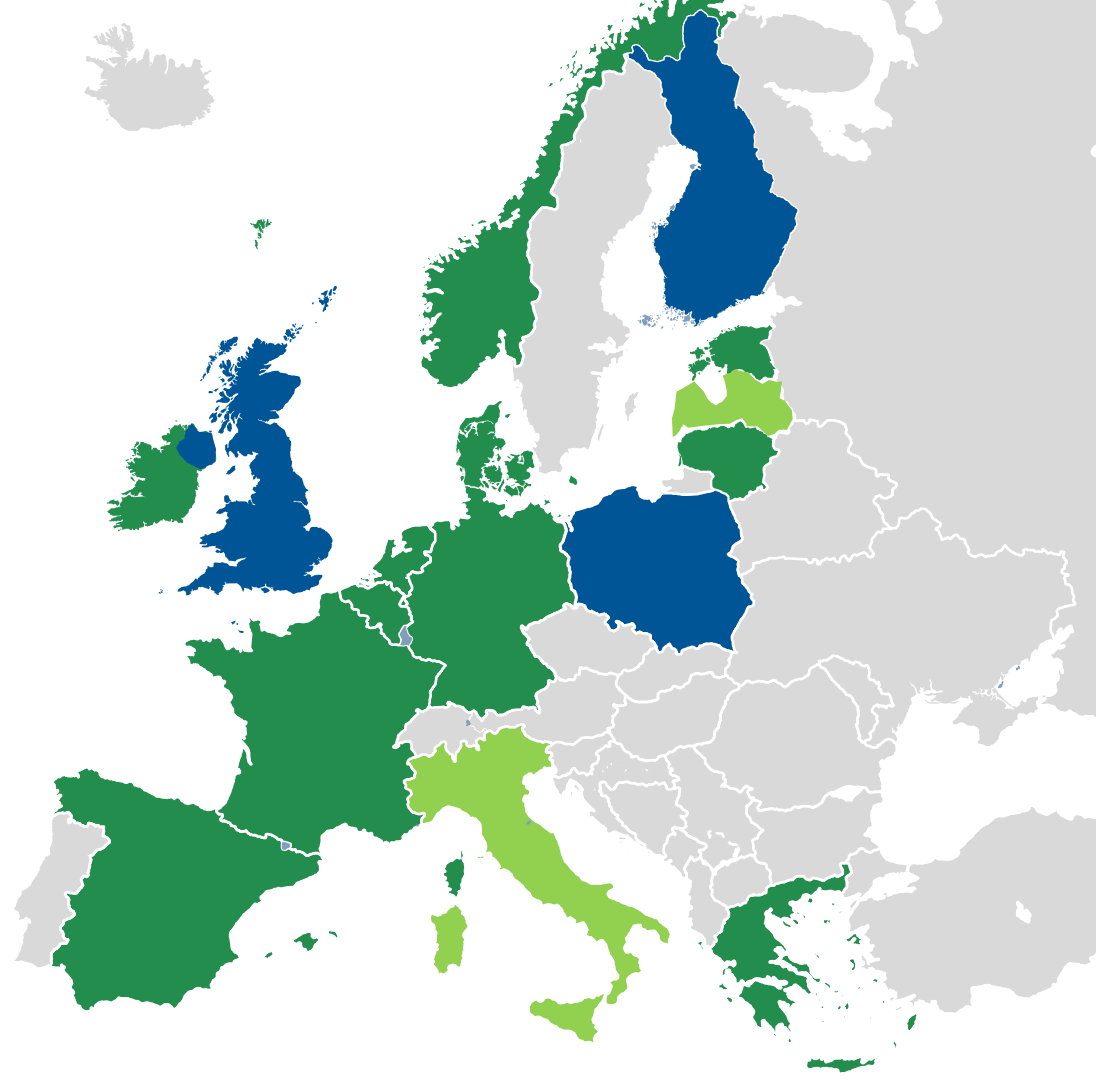
Central allocations



Considering central allocations



Seabed lease first,
then CfDs



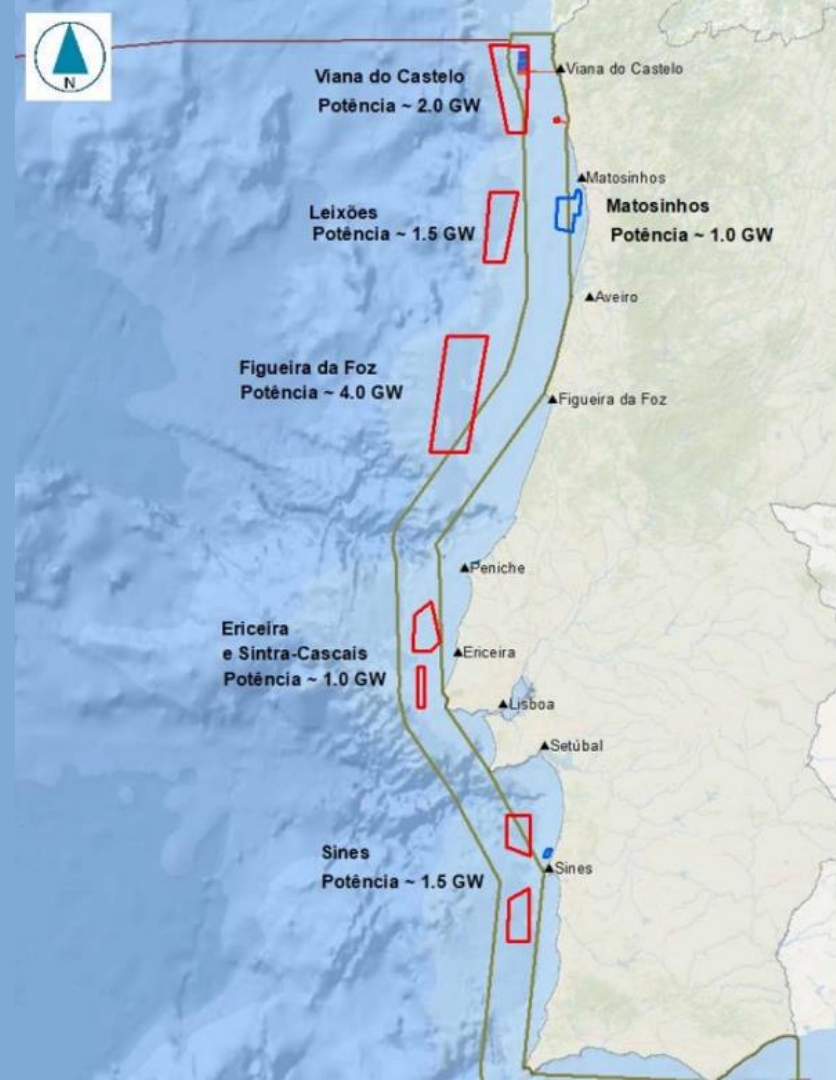
Happy coexistence with other sectors



Benefits to local communities



10 GW is deliverable



Thank you

Wind[°]
EUROPE

windeurope.org



WindEurope, Rue Belliard 40
1040 Brussels, Belgium